

TECU® Patina

Colour Variations on TECU® Patina

(preliminary documentation)

TECU® Patina
Colour Variations on TECU® Patina
(ENG)



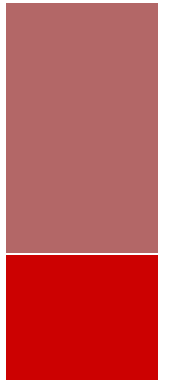
TECU® Patina

Colour Variations on TECU® Patina (preliminary documentation)



Date / 29.05.2008

The surface of TECU® Patina sheets corresponds to that of a naturally evolved copper patina. Colour variations are an ordinary and, in fact, a desired part of the patination process, as they underscore the natural quality of the product and the individual character of each sheet. Differences in the sheets varying from tones of yellow-green to blue-green are gradually evened out over time as a result of exposure to weathering. They are not an indication of quality deficiencies, but rather a mark of the product's unique natural qualities.



For more information, please contact:

KME Germany AG & Co. KG

BU Rolled Roofing / Project Consulting (Int.)
Klosterstraße 29, 49074 Osnabrück, Germany

Tel. +49 (0) 541 / 321 - 2000

Fax +49 (0) 541 / 321 - 2111

www.tecu.com, info-tecu@kme.com

Information within this paper might be preliminary and subject to changes due to technical advance.

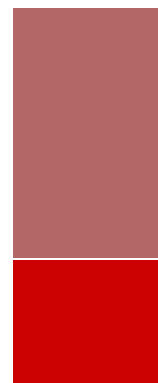
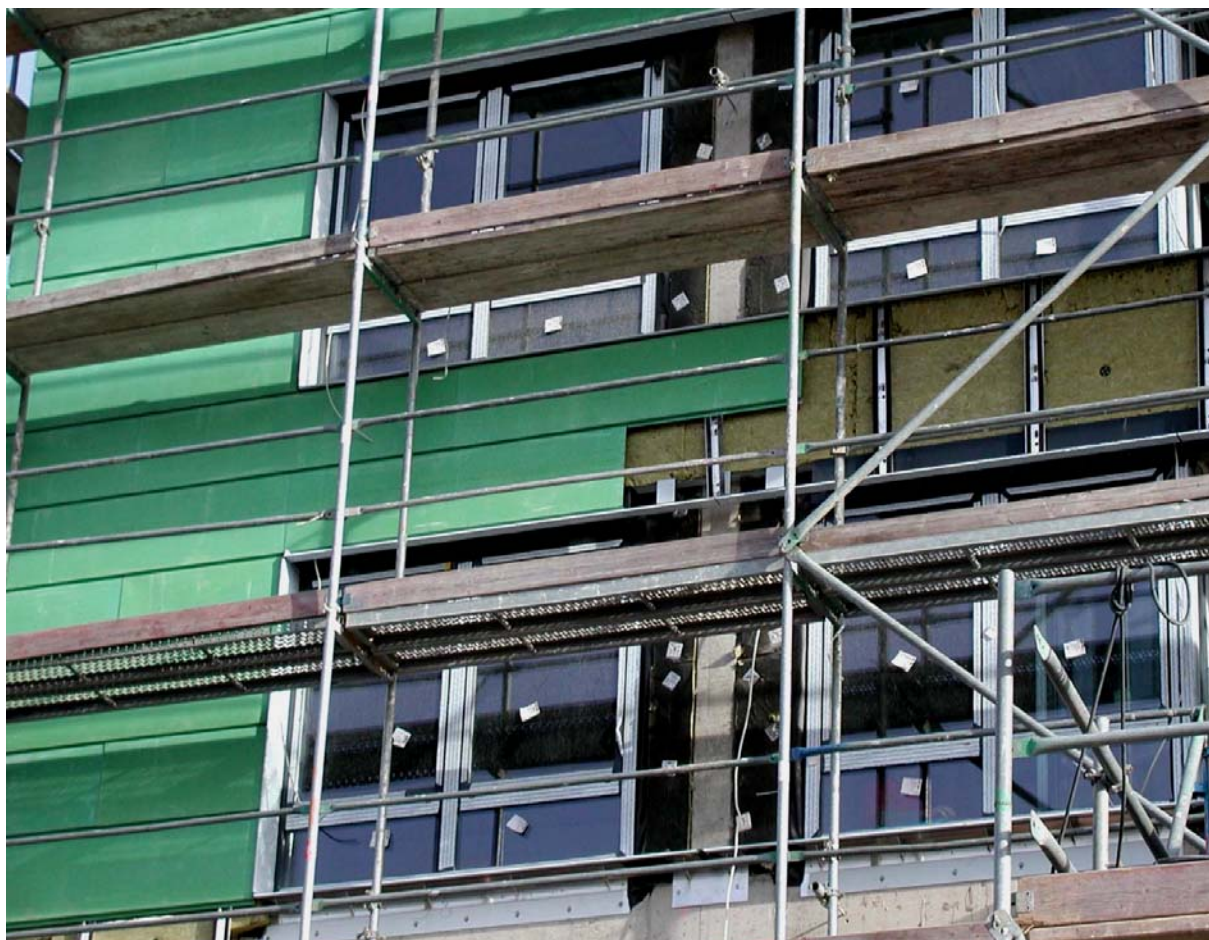


Colour Variations on TECU® Patina (preliminary documentation)



Colour Variations on TECU® Patina (preliminary documentation)





Colour Variations on TECU® Patina (preliminary documentation)



Colour Variations on TECU® Patina (preliminary documentation)

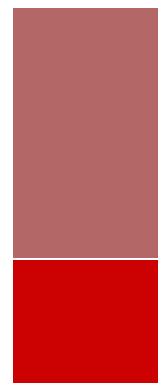


Colour Variations on TECU® Patina (preliminary documentation)

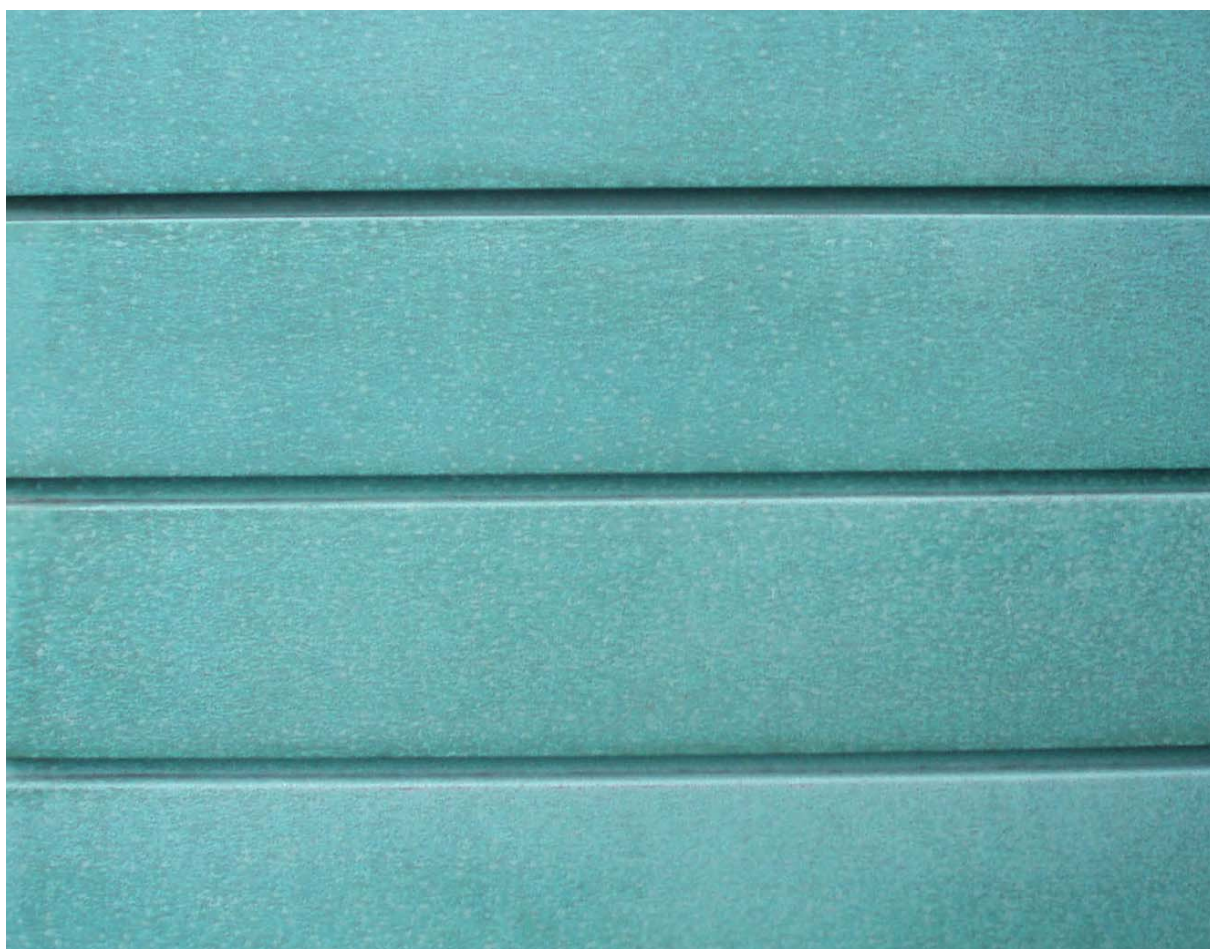


Colour Variations on TECU® Patina (preliminary documentation)

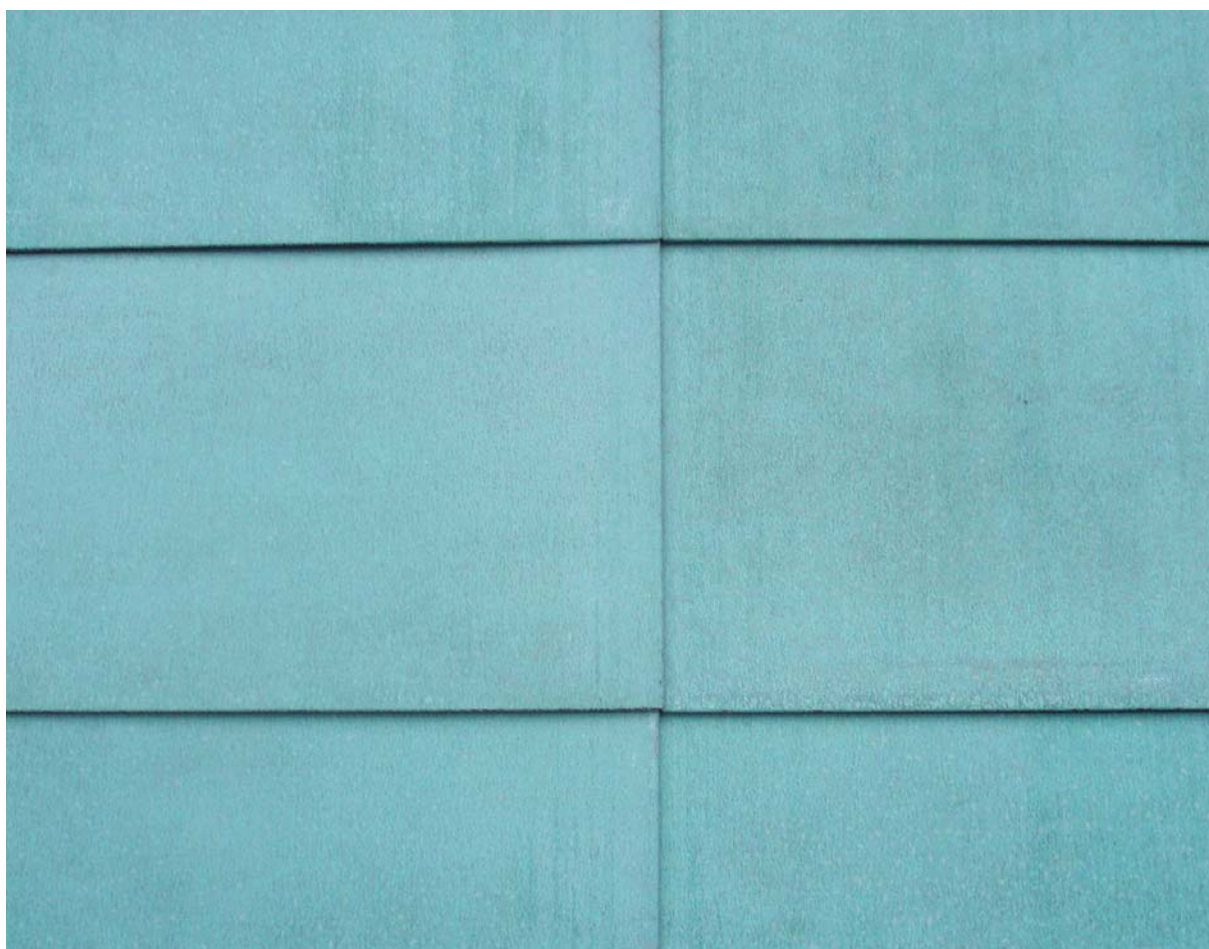
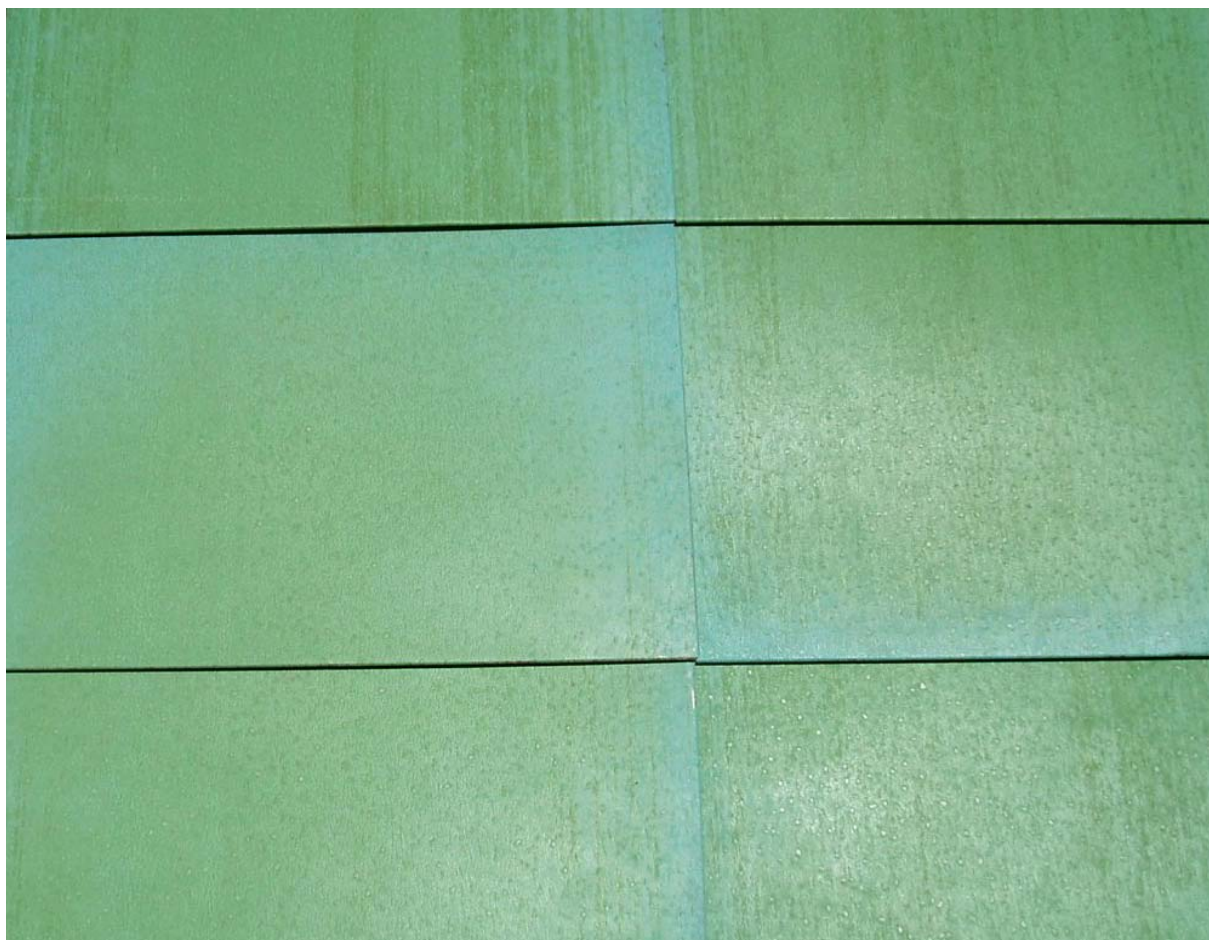




Colour Variations on TECU® Patina (preliminary documentation)



Colour Variations on TECU® Patina (preliminary documentation)



Colour Variations on TECU® Patina (preliminary documentation)